

**SSR4 Antibody (monoclonal) (M01)****Mouse monoclonal antibody raised against a full length recombinant SSR4.****Catalog # AT4047a****Specification**

---

**SSR4 Antibody (monoclonal) (M01) - Product Information**

Application	WB, IF, E
Primary Accession	<a href="#">P51571</a>
Other Accession	<a href="#">BC003371</a>
Reactivity	Human
Host	mouse
Clonality	Monoclonal
Isotype	IgG1 Kappa
Calculated MW	18999

**SSR4 Antibody (monoclonal) (M01) - Additional Information****Gene ID** 6748**Other Names**

Translocon-associated protein subunit delta, TRAP-delta, Signal sequence receptor subunit delta, SSR-delta, SSR4, TRAPD

**Target/Specificity**

SSR4 (AAH03371, 24 a.a. ~ 173 a.a) full-length recombinant protein with GST tag. MW of the GST tag alone is 26 KDa.

**Dilution**

WB~~1:500~1000

IF~~1:50~200

E~~N/A

**Format**

Clear, colorless solution in phosphate buffered saline, pH 7.2 .

**Storage**

Store at -20°C or lower. Aliquot to avoid repeated freezing and thawing.

**Precautions**

SSR4 Antibody (monoclonal) (M01) is for research use only and not for use in diagnostic or therapeutic procedures.

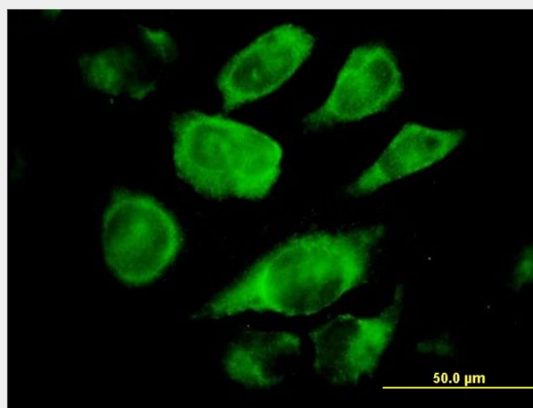
**SSR4 Antibody (monoclonal) (M01) - Protocols**

Provided below are standard protocols that you may find useful for product applications.

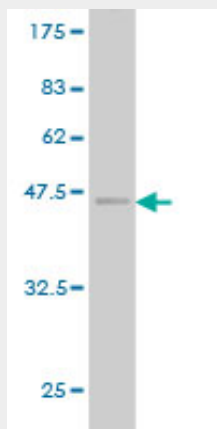
- [Western Blot](#)

- [Blocking Peptides](#)
- [Dot Blot](#)
- [Immunohistochemistry](#)
- [Immunofluorescence](#)
- [Immunoprecipitation](#)
- [Flow Cytometry](#)
- [Cell Culture](#)

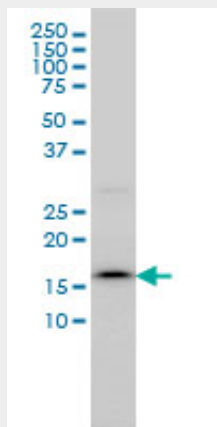
#### SSR4 Antibody (monoclonal) (M01) - Images



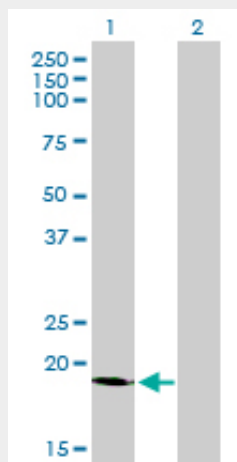
Immunofluorescence of monoclonal antibody to SSR4 on HeLa cell. [antibody concentration 10 ug/ml]



Antibody Reactive Against Recombinant Protein. Western Blot detection against Immunogen (42.24 KDa) .



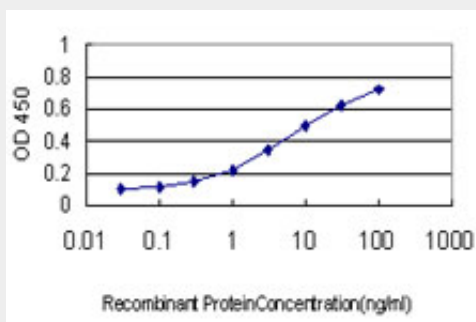
SSR4 monoclonal antibody (M01), clone 2D3 Western Blot analysis of SSR4 expression in C32 (Cat # AT4047a )



Western Blot analysis of SSR4 expression in transfected 293T cell line by SSR4 monoclonal antibody (M01), clone 2D3.

Lane 1: SSR4 transfected lysate(19 KDa).

Lane 2: Non-transfected lysate.



Detection limit for recombinant GST tagged SSR4 is approximately 0.1ng/ml as a capture antibody.

### SSR4 Antibody (monoclonal) (M01) - Background

SSR4, also called TRAPD, is assumed to be involved in protein secretion. It is located in the Xq28 region, arranged in a compact head-to-head manner with the IDH3G gene. These two genes are driven by a bidirectional promoter located between them, and encode proteins involved in unrelated biochemical pathways located in different compartments of the cell. The nontranscribed intergenic region represents only 133 bp and is embedded in a CpG island. The CpG island functions as a bidirectional promoter to initiate the transcription of both functionally unrelated genes with distinct expression patterns. SSR4 consists of six exons and is approximately 70 kb telomeric to the ALD gene. Although alternative splicing of exon 5 has not been detected in human SSR4, transcript variants missing the region homologous to human exon 5 have been detected in both *Xenopus laevis* and *Mus musculus*.

### SSR4 Antibody (monoclonal) (M01) - References

Large-scale mapping of human protein-protein interactions by mass spectrometry. Ewing RM, et al. Mol Syst Biol, 2007. PMID 17353931. The LIFEdb database in 2006. Mehrle A, et al. Nucleic Acids Res, 2006 Jan 1. PMID 16381901. From ORFeome to biology: a functional genomics pipeline.

Wiemann S, et al. Genome Res, 2004 Oct. PMID 15489336. The status, quality, and expansion of the NIH full-length cDNA project: the Mammalian Gene Collection (MGC). Gerhard DS, et al. Genome Res, 2004 Oct. PMID 15489334. Cloning and molecular characterization of a human ortholog of Monodelphis TRAPD in ultraviolet B-induced melanoma. Wang Z, et al. Melanoma Res, 2004 Apr. PMID 15057039.